



ORGANIZATION

GSFA is a government entity and affiliate of the Rural County Representatives of California (RCRC), a forty-member county service organization that champions policies on behalf of California's rural counties.



**Rural
Alliance,
Inc.**



Rural Counties
Environmental Services
Joint Powers Authority
ESJPA

THE CALIFORNIA WILDFIRE CRISIS

FOREST HEALTH

Our forests are in a very unhealthy state, facing longer fire seasons, drought, invasive species, tree mortality, warmer temperatures, and the consequences of a century of unnatural fire suppression.

The result is overgrown and under-managed forests that lead to catastrophic fires with significant negative environmental impacts felt throughout California.



CAL FIRE, Tree Mortality Viewer, High Hazard Zones, 2022

WILDFIRE SMOKE IMPACTS



SMOKE EXPOSURE

In the past decade, most Americans have experienced statistically significant increases in days of light, medium, and heavy wildfire smoke and decreases in smoke-free days. Increases in the number of days of smoke were greatest for the most dense, dangerous, and disruptive category of smoke.



ECONOMIC IMPACT

Frontline workers are increasingly experiencing exposure to wildfire smoke. Smoke will continue to increase the risk of occupational hazards, decrease productivity, and cause worker disruptions across multiple industries.



STUDENT IMPACT

Wildfires have increased heavy smoke exposure for young children and students in poverty. Nationwide, between 2011-2015 and 2017-2021, heavy smoke student-days increased 300%.



ENVIRONMENTAL IMPACT

The carbon emitted by California's wildfires has reversed the state's carbon emissions gains, with the greenhouse gases from California's 2020 wildfire season totaling nearly double the emissions reductions achieved over the past two decades.

Sources:
Lappe, Brooke, and Jason Vargo. 2022. "Disruptions from Wildfire Smoke: Vulnerabilities in Local Economies and Disadvantaged Communities in the U.S." Federal Reserve Bank of San Francisco Community Development Research Brief 2022-06.

Michael Jerrett, Amir S. Jina, Miriam E. Marlier. Up in smoke: California's greenhouse gas reductions could be wiped out by 2020 wildfires. Environmental Pollution. Volume 310, 2022.119888. ISSN 0269-7491.

INTERVENTION

The preponderance of science supports the need for proactive fuel reduction projects to restore forest health and reduce the risk of catastrophic wildfire. State and Federal policy also emphasizes the need to increase the pace and scale of these projects.

NEED

Landscape scale forest health projects are presently stalled without a marketable outlet for the biomass.

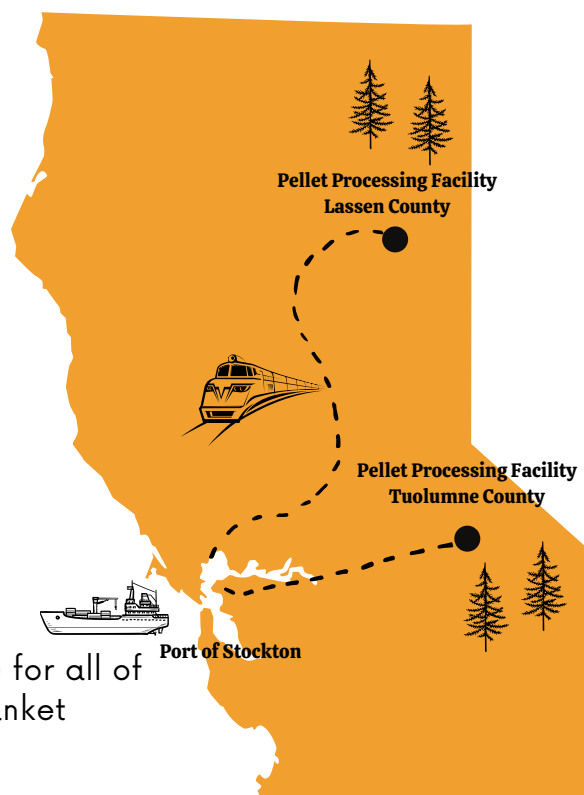
GSNR directly addresses this critical need by creating a sustainable and economically viable use from this woody biomass.

OUR AIM

GSNR's proposed forest resiliency project would sustainably procure and process excess biomass produced as part of forest health initiatives into a pelletized fuel source for use in renewable energy generation overseas, as a replacement for fossil fuels.

PROPOSED PROJECT

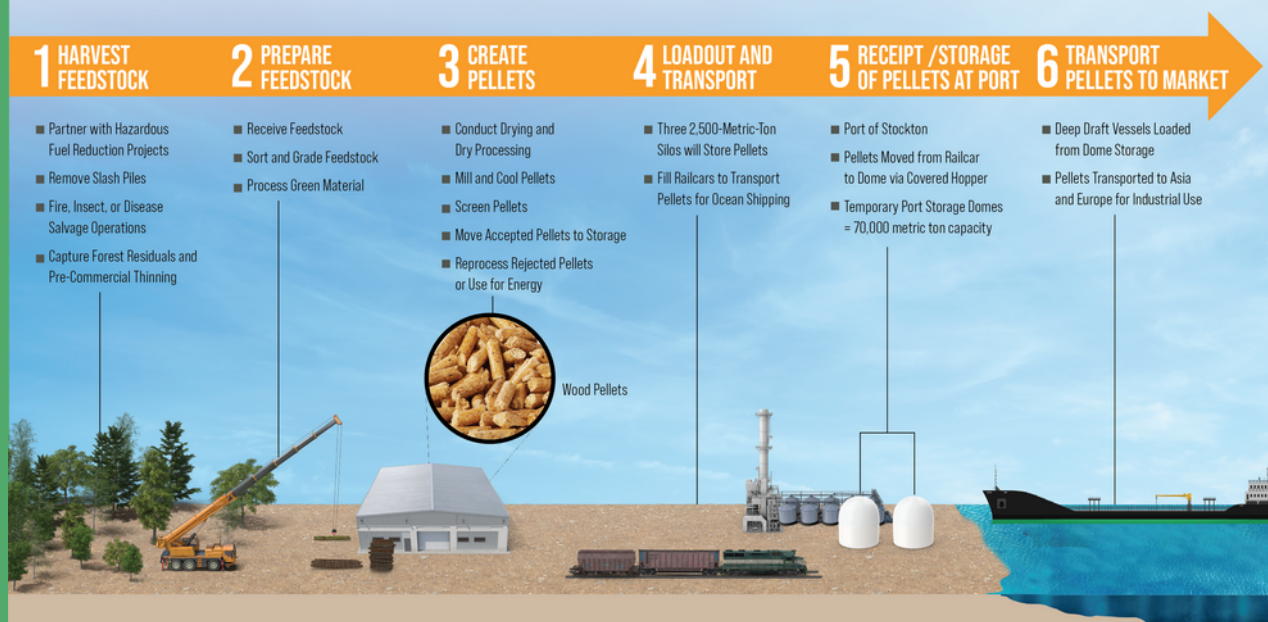
- ➔ Develop two processing facilities, one in the foothills of the Central Sierra Nevada Mountain range, in **Tuolumne County**, and one in the Modoc Plateau of Northern California, in **Lassen County**.
- ➔ The finished product would then be shipped by rail to the **Port of Stockton** for international shipping.



This project is supported through a 20-year Master Stewardship Agreement with the U.S. Forest Service (USFS) for all of California's 18 national forests in Region 5 as well as a blanket purchase agreement with USFS.

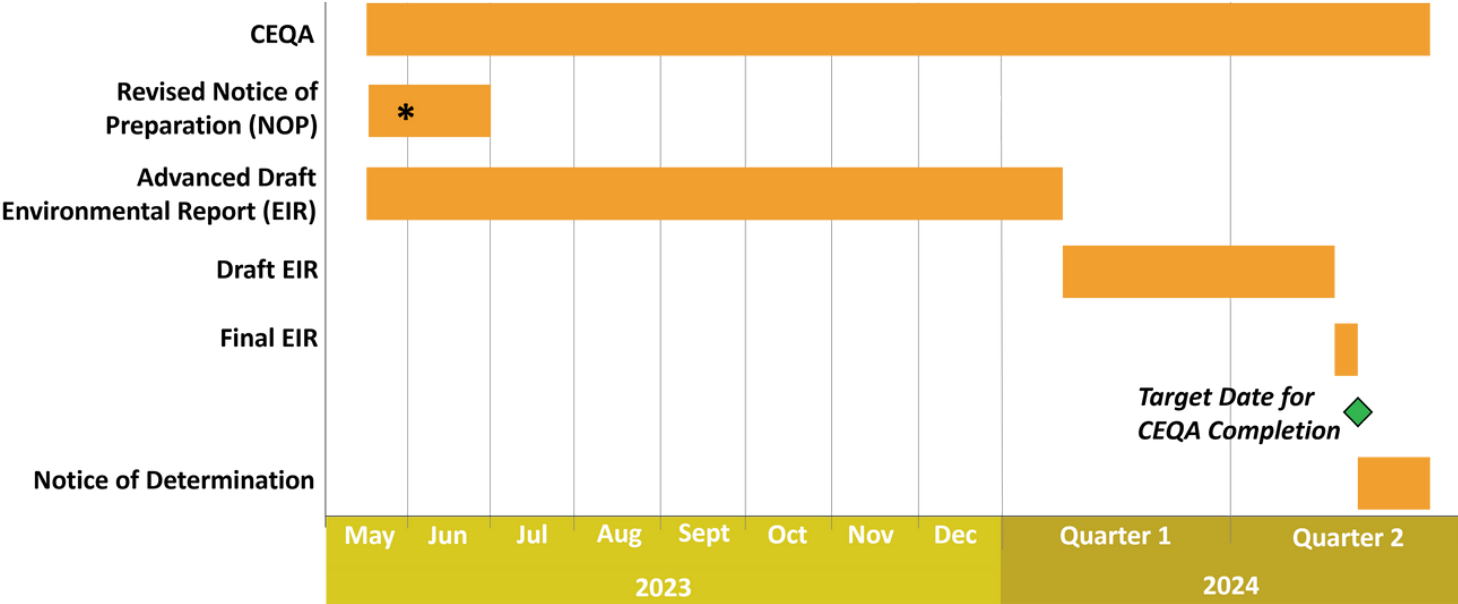
GSNR FOREST RESILIENCY PROJECT

Pellet Manufacturing and Transport Process



PROJECT STATUS

GSFA, acting as the lead agency, has commenced the California Environmental Quality Act (CEQA) process for GSNR’s proposed forest resiliency project, to ensure any and all potential impacts are identified, comprehensively evaluated, and mitigated to the fullest extent feasible. It is anticipated that the Draft Environmental Impact Report will be released in the first quarter of 2024, at which time there will be further opportunity for public review and comment.



* NOP reissued on June 1, 2023

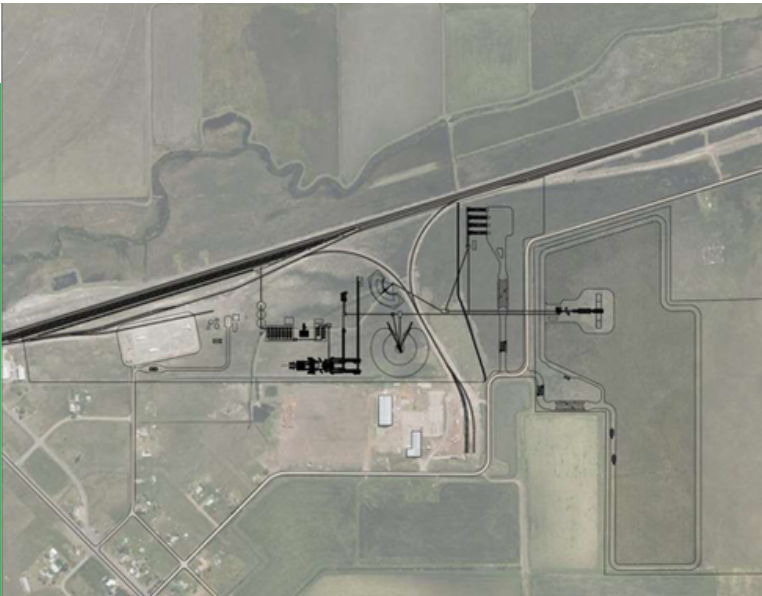
LASSEN COUNTY

PROPOSED PROJECT LOCATION:
653-800 WASHINGTON AVENUE,
NUBIEBER, CA 96009

ESTIMATED ECONOMIC IMPACTS* :

- 65 JOBS
- \$412,000 ANNUAL TAX REVENUE
- \$188M ANNUAL ECONOMIC IMPACT

* Data displays the annual impacts when the project is at full production.



CONTACT US

Golden State Natural Resources
1215 K Street, Suite 1650
Sacramento, CA 95814
gsnr@gsnrnet.org