



GSNR: STOCKTON STAKEHOLDER MEETING #2

February 22, 2024

AGENDA

1	Welcome & Introductions
2	Project Overview & Status
3	Q&A Session
4	Large Group Discussion
5	Next Steps & Wrap Up

MEETING GOALS

- Learn about the proposed project, its status, and the CEQA timeline.
- Address any questions.
- Listen to and discuss community concerns.
- Identify potential future engagement opportunities.

SETTING THE STAGE



WHAT WE HAVE HEARD SO FAR:

- More Community Engagement is Needed
- How Many New Jobs?
- How Many New Trains?
- What About Fire Safety & Suppression?
- What Are the Air Quality Effects of the Project?

RCRC ORGANIZATION



Divisions

- Government Affairs
- Economic Development
- Business Development
- Administration and Finance

Affiliate Entities



Rural Counties[✓]
Environmental Services
Joint Powers Authority
ESJPA



Rural
Alliance,
Inc.



golden state
connect
authority

THE CALIFORNIA WILDFIRE CRISIS

FOREST HEALTH:

- Our forests are overgrown and under-managed, leading to catastrophic, unnatural fires.

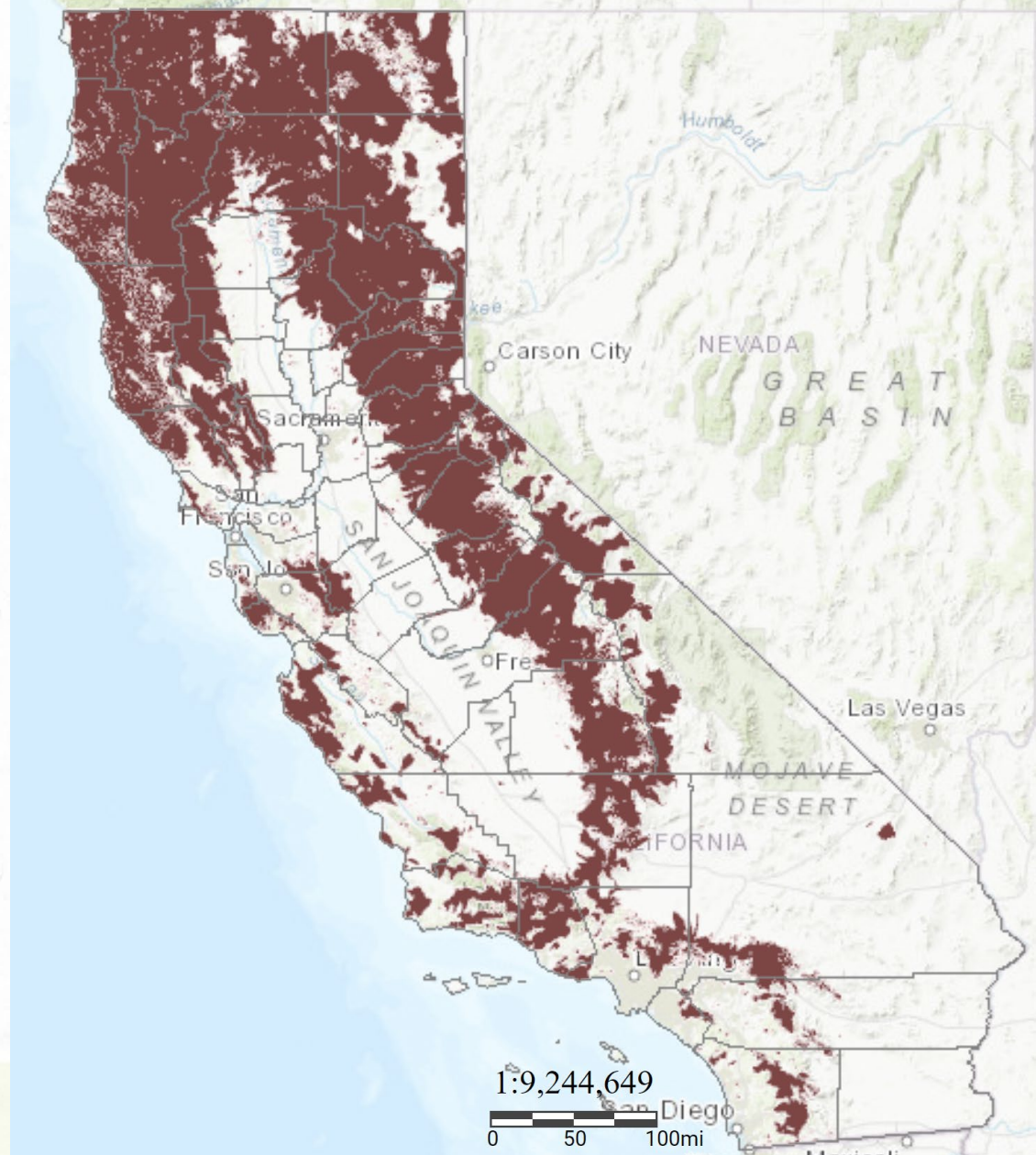
INTERVENTION:

- State and Federal governments strongly support fuel reduction projects that restore forest health and reduce the risk of catastrophic wildfire.

NEED:

- Major forest health projects can't be completed without a marketable outlet for the biomass.

GSNR directly addresses this critical need by creating a sustainable and economically viable use from this woody biomass.



Source: CAL FIRE, [Tree Mortality Viewer](#), High Hazard Zones, 2022

WILDFIRE IMPACTS



ENVIRONMENTAL IMPACT:

- The carbon emitted by California's wildfires has **reversed the state's carbon emissions gains**, with the greenhouse gases from California's 2020 wildfire season totaling nearly double the emissions reductions achieved over the past two decades.

SMOKE EXPOSURE

- Heavy smoke in the Stockton metro area went from about **1 day every 4 years (2011-2015) to about 15 days each year (2017-2021)**.

ECONOMIC IMPACT:

- Wildfire smoke is more likely to disrupt and harm frontline workers. The Stockton region, home to 101,000 frontline workers, experienced **more than 2.3 million frontline worker-days of heavy smoke in 2021**.

STUDENT IMPACT:

- Wildfires have increased heavy smoke exposure for young children and students in poverty. Nationwide, between 2011–2015 and 2017–2021, **heavy smoke student-days increased 300%**.

Sources:

- Lappe, Brooke, and Jason Vargo. 2022. "Disruptions from Wildfire Smoke: Vulnerabilities in Local Economies and Disadvantaged Communities in the U.S." Federal Reserve Bank of San Francisco Community Development Research Brief 2022-06.
- Michael Jerrett, Amir S. Jina, Miriam E. Marlier. Up in smoke: California's greenhouse gas reductions could be wiped out by 2020 wildfires. *Environmental Pollution*. Volume 310, 2022.119888. ISSN 0269-7491.

COMPANY OVERVIEW

Golden State Finance Authority (GSFA) is a governmental entity that has led numerous program financing efforts within California since its creation in 1993

Governance & Funding



Program



Organizational Support



Forest Health Initiatives

Pellet Operations

Port Operations



GSNR FOREST RESILIENCY PROJECT

Pellet Manufacturing and Transport Process

1 HARVEST FEEDSTOCK

- Partner with Hazardous Fuel Reduction Projects
- Remove Slash Piles
- Fire, Insect, or Disease Salvage Operations
- Capture Forest Residuals and Pre-Commercial Thinning

2 PREPARE FEEDSTOCK

- Receive Feedstock
- Sort and Grade Feedstock
- Process Green Material

3 CREATE PELLETS

- Conduct Drying and Dry Processing
- Mill and Cool Pellets
- Screen Pellets
- Move Accepted Pellets to Storage
- Reprocess Rejected Pellets or Use for Energy



Wood Pellets

4 LOADOUT AND TRANSPORT

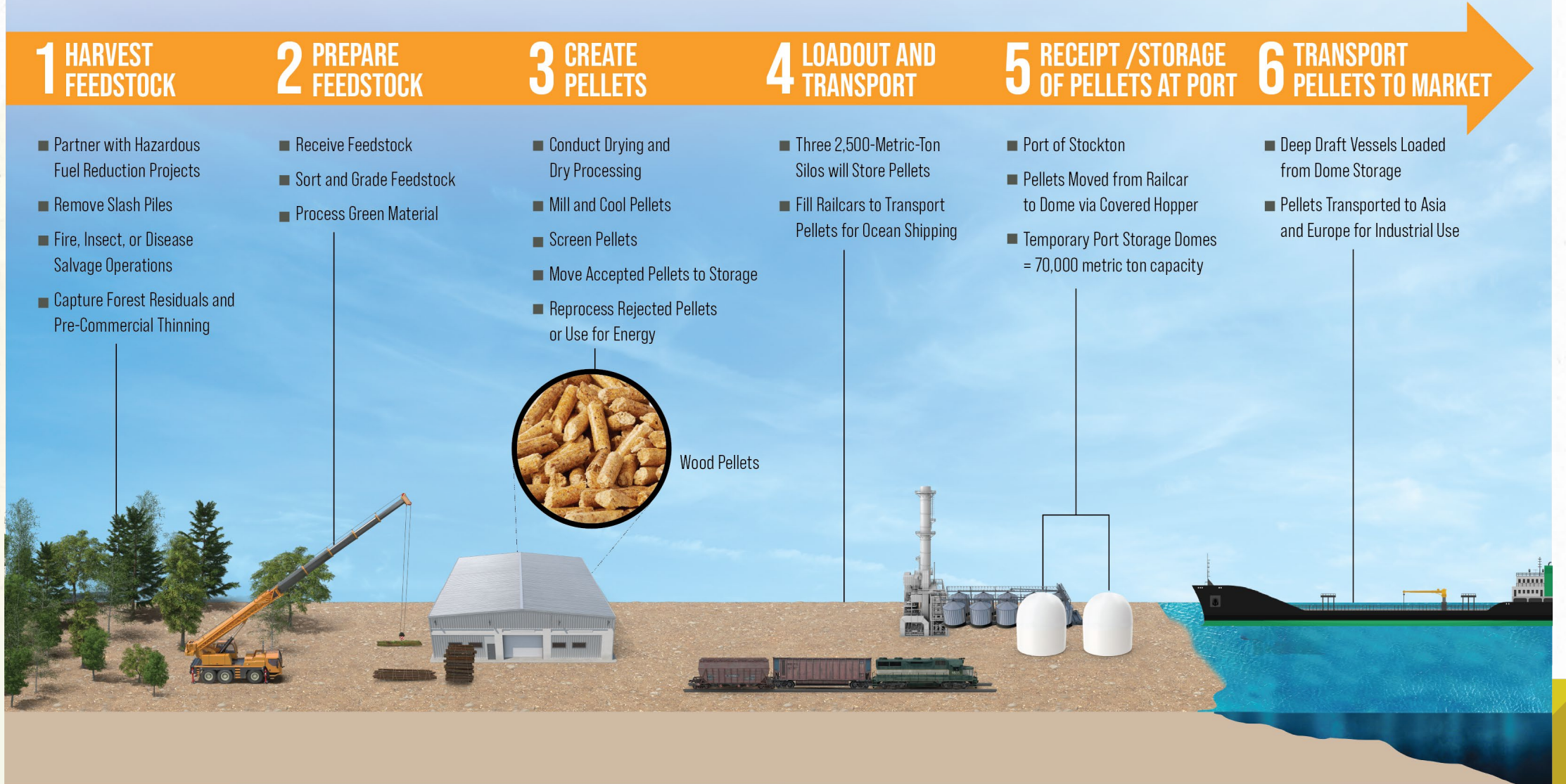
- Three 2,500-Metric-Ton Silos will Store Pellets
- Fill Railcars to Transport Pellets for Ocean Shipping

5 RECEIPT /STORAGE OF PELLETS AT PORT

- Port of Stockton
- Pellets Moved from Railcar to Dome via Covered Hopper
- Temporary Port Storage Domes = 70,000 metric ton capacity

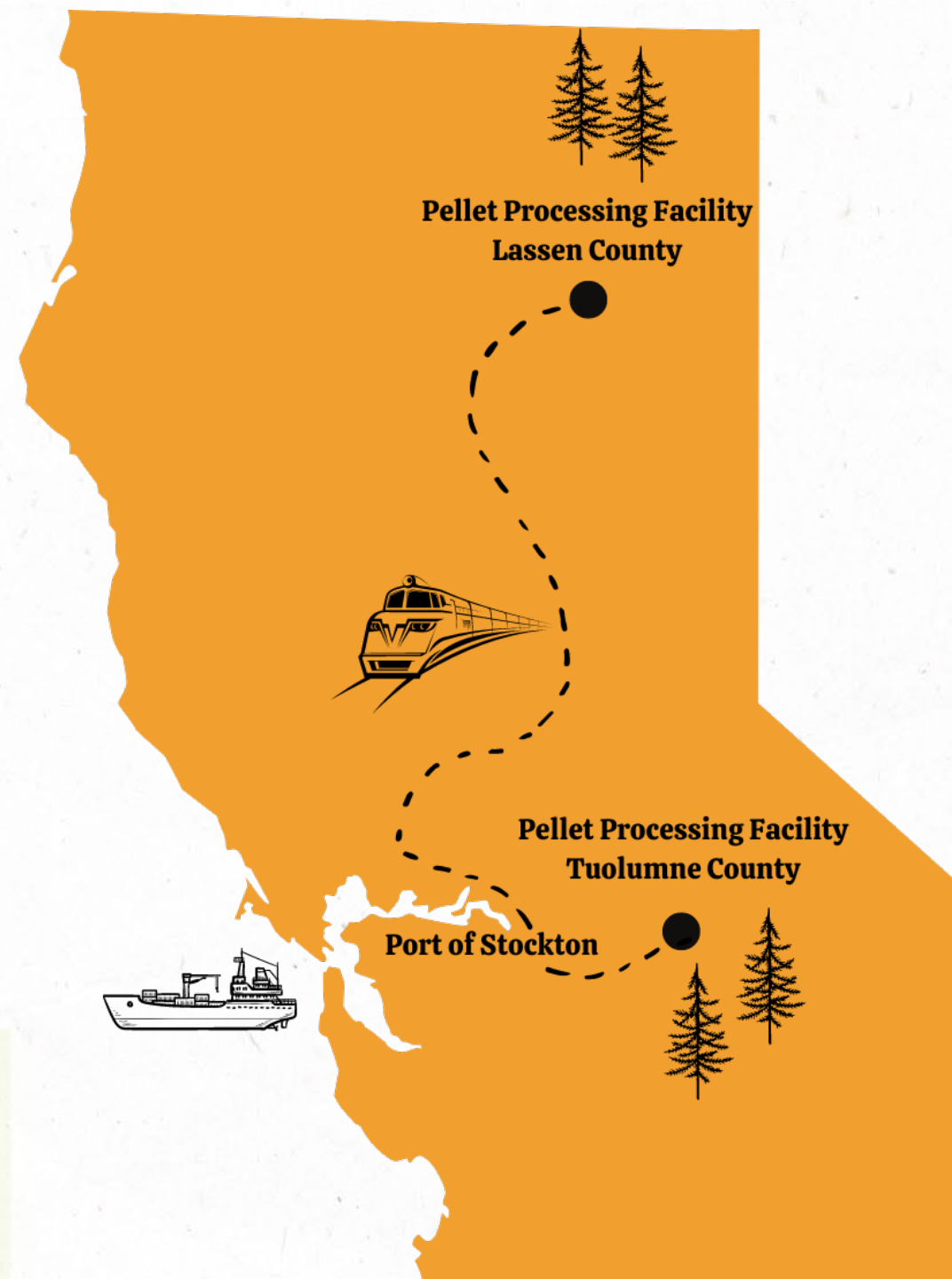
6 TRANSPORT PELLETS TO MARKET

- Deep Draft Vessels Loaded from Dome Storage
- Pellets Transported to Asia and Europe for Industrial Use



FOREST RESILIENCY PROJECT

- Sustainably procure and process excess biomass produced as part of forest health initiatives into a pelletized fuel source for use in renewable energy generation overseas.
- **Proposed Project:**
 - Develop two processing facilities, one in the foothills of the Central Sierra Nevada Mountain range, in **Tuolumne County**, and one in the Modoc Plateau of Northern California, in **Lassen County**.
 - The finished pellets would then be shipped by rail to the **Port of Stockton** for international shipping.
- Project is supported through a 20-year Master Stewardship Agreement signed with the U.S. Forest Service (USFS) for all of California's 18 national forests in Region 5 as well as a blanket purchase agreement with USFS.



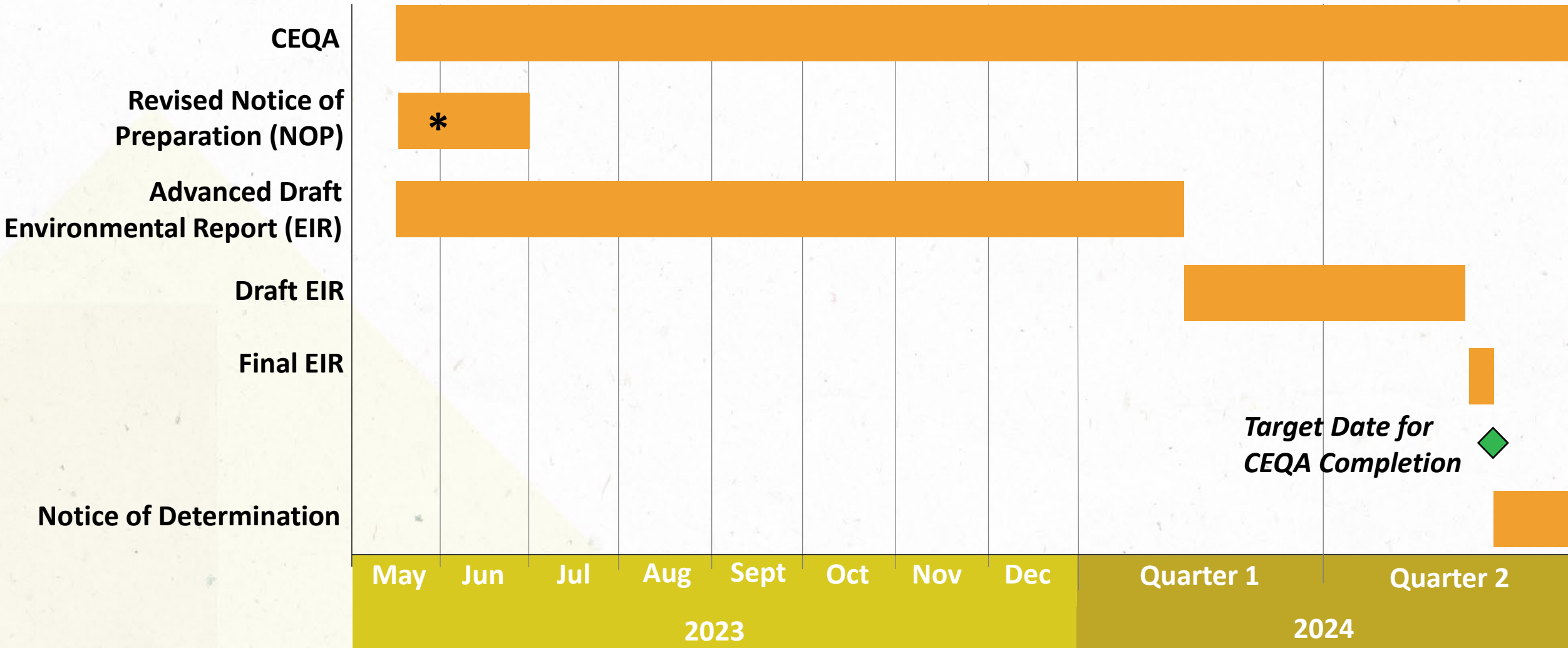
PORT OF STOCKTON-PROJECT SITE

- **Proposed Facility Location:** +/- 28-Acre site at Edwards Avenue at Lipes Drive in the Port's West Complex
- **Use:** Receipt, storage, and export of finished wood pellets
- **Process:**
 - Pellets are transported to Port via train, then unloaded and stored in large concrete domes.
 - Domes are equipped with advanced nitrogen fire protection and temperature / gas monitoring systems
 - Pellets are gravity fed onto covered conveyors, which transport the pellets to a cargo ship loader.
 - Dust collection systems are designed throughout the process and best management practices will be in place for good house keeping
- **Transport Frequency:**
 - Trains:
 - 70 unit trains per year to be delivered from Lassen, one every 4-5 days
 - 30 equivalent unit trains per year from Tuolumne
 - approximately 4-8 cars at a time
 - Ships: Approximately 25-30 vessels would be used each year



Project Site (27.93 acres)

PROJECT STATUS TIMELINE: CALIFORNIA ENVIRONMENTAL QUALITY ACT (CEQA)



* *NOP reissued on June 1, 2023*

SETTING THE STAGE

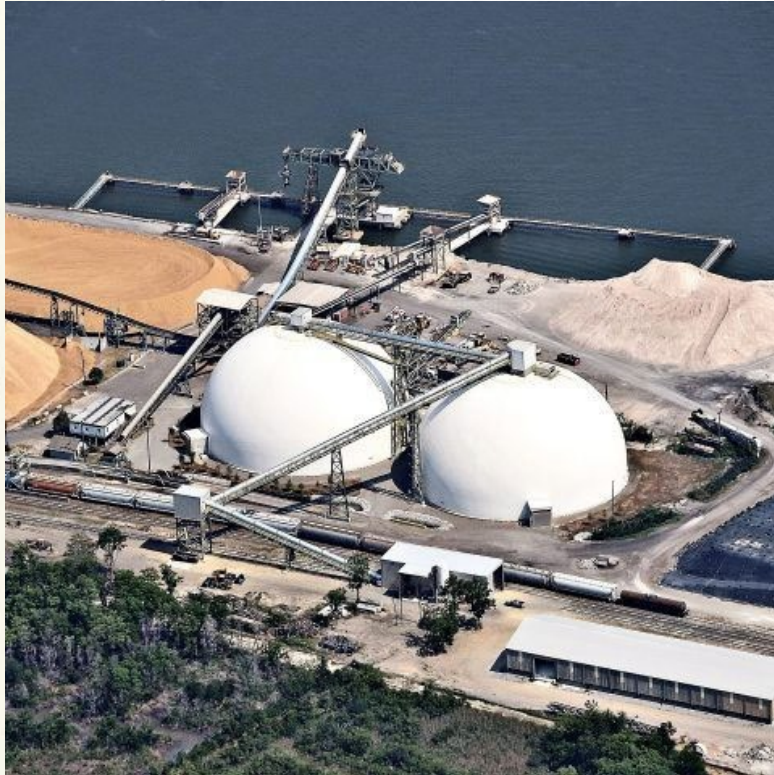


WHAT WE HAVE HEARD SO FAR:

- **More Community Engagement is Needed**
- **How Many New Jobs?**
- **How Many New Truck and Trains?**
- **What About Fire Safety & Suppression?**
- **What Are the Air Quality Effects of the Project?**

HEALTH & SAFETY - HAZARD REDUCTION - DOME

**Concrete Domes – Peebles Industries
Savannah, GA – Planned for Stockton**



**Steel Silos– Woodville Pellets
Port Arthur, TX**

INPUT OPPORTUNITIES

Input:

- Additional Meetings
- Stockton Community Meeting (Feb 2024)

Informational Resources:

- Website: www.goldenstatenaturalresources.com
(Stockton Page: www.goldenstatenaturalresources.com/port-of-stockton)
- Email gnsr@gnsrnet.org
- GSNR Mailing List



GOLDEN STATE
NATURAL RESOURCES

JOIN OUR MAILING LIST

I agree to be emailed